

UPWARD'S INFINITY REWARD SYSTEM



UPWARD Infinity Reward System

Our Infinity Reward System offers our Brand Partners the opportunity to be rewarded with our best-in-class compensation plan for sharing Upward with others, empowering them to have success on our products and building and leading a team of other successful Brand Partners.

11 Ways to EARN from the Infinity Reward System

Wholesale to Retail Profit

Fast Start Bonus

Fast Mentorship Bonus

Vanishing Autoship

Infinity Team Binary Bonus

Unilevel Bonus

Unilevel Leadership Match Bonus

Rank Advancement Bonus

Lifestyle Leadership Bonus

Global Leadership Bonus

Luxury Travel Getaways



The figures within this document are not guarantees or projections of your actual earnings, profits, or success. UPWARD makes no guarantee of financial success. Because of the countless variables that may affect a Brand Partner's ability to succeed in this field, it is impossible to accurately state what a Brand Partner may or may not expect to achieve. Consequently, UPWARD does not and will not make any guarantee of success of income, whether explicit or implied, and past Brand Partner testimonials as well as the information included in UPWARD's updated Income Disclosure Statement are only examples of what can be obtained as a Brand Partner with UPWARD. Past results do not represent any indication of future success or earnings.



Enroll in Upward International

- As a brand partner
- As a preferred customer

Purchase from Upward International

- As a Retail (Guest) Customer

Getting Started with UPWARD

Get your feet wet by exploring
the many ways to GET STARTED!





Brand Partner

- No enrollment fee
- Get at least a 25% or higher discount off product retail prices
- Get Unlimited access to UPWARDS back office
- Personal/Business account
- Enroll other Brand Partners
- Activate your free account*
- Earn rewards

Preferred Customer

- No enrollment fee
- Product for personal use only
- Get at least a 25% or higher discount off product retail prices
- Do not earn commissions
- Cannot retail product
- Cannot enroll new Preferred Customers or Brand partners
- Can upgrade to Distributor rank
- 50% of PV generated from orders counts towards Brand Partners' Personal Qualifying Volume (PQV)
- Don't earn rewards

Purchase as a Retail (Guest) Customer

- No enrollment fee
- Purchase directly from UPWARD International online
- Do not earn commissions
- Cannot enroll new Preferred Customers or Brand partners
- Product for personal use only
- 50% of PV generated from orders counts towards Brand Partners' personal group volume
- Don't earn rewards

***Your account will not hold and accumulate volume in the Compensation System until it has been activated. (See "Activate Your Retail Business Center (optional)" for details.*

Reward Plan Basics



To become an active Brand Partner,
you must buy an Enrollment Pack*

Starter Pack

110 PV Pack

Master Pack

220 PV Pack

Max Pack

440 PV Pack

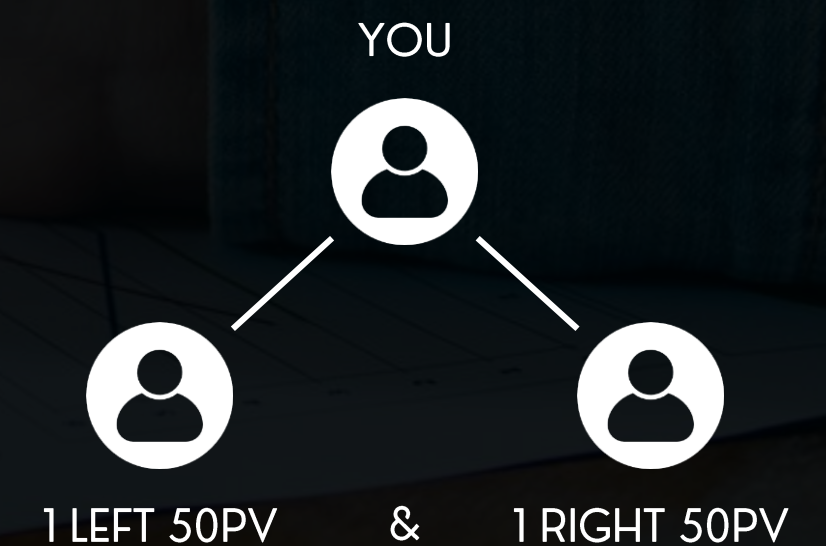
Premier Pack

880 PV Pack

Challenge Pack

1100 PV Pack

To stay active and commission qualified
monthly, you must have a minimum of 50
Personal Qualifying Volume (PQV)



**Must purchase enrollment pack to activate.*

**Every 28 days (Monthly cycle)*

Reward Plan Basics



Weekly Pay Period

Each weekly pay period runs from 12am Midnight Central each Tuesday through 11:59pm Central, the following Monday

Commission Active Period

28 Days

Monthly Active Status

Minimum 50PV

28 Days

Monthly Cycle

28 Days

Commission Payment

Weekly

Wednesdays

Monthly

3rd day of the Next Month

11 Ways to Earn with Upward

01

Wholesale to Retail
Profit (Weekly)

02

Fast Start Bonus
(Weekly)

03

Fast Mentorship Bonus
(Weekly)

04

Vanishing Smartship

05

Infinity Team Binary
Bonus (Weekly)

06

Unilevel Team Bonus
(Weekly)

07

Generational Matching
Bonus (Weekly)

08

Rank Achievement Bonus
(Lifetime - Paid Once)

09

Lifestyle Leadership
Bonus (Monthly)

10

Global Leadership Pool
Bonus (Weekly)

11

Luxury Life
Getaways



Retail Customer

25%

Preferred Customer

20%

1

WHOLESALE TO RETAIL PROFIT (PAID WEEKLY)

Every Enrolled **Brand Partner** can earn **25%** commission from **RETAIL/GUEST** Customers. They also earn **20%** commission from **PREFERRED** customers who purchase on the replicated website.

*Only 50% of the PV generated from this sale will go towards Brand Partner's **Personal Qualifying Volume (PQV)**.

Selling **UPWARDS** products directly to your customers is the start of a solid foundation for your business.

Enrollment Packs

#	PV	Bonus
Starter Pack	110	22%
Master Pack	220	22%
Max Pack	440	22%
Premier Pack	880	22%
Challenge Pack	1100	22%

2 FAST START BONUS (PAID WEEKLY)

The **Fast Start Bonus** is a bonus paid for the initial customer gathering efforts of the new **Brand Partner** who has purchased an UPWARD **Product Enrollment Pack**.

Each **QUALIFIED AND ACTIVE** Brand Partner earns a **22%** fast start bonus of the PV on the enrollment packs purchased by new Brand Partners they personally enrolled to join their team.



3 FAST MENTORSHIP BONUS (PAID WEEKLY)

Each time your personally enrolled **Brand Partners** sell an UPWARD enrollment Pack, you will receive a **Fast Mentorship Bonus** on the bonus they earn. Fast Mentorship bonus is given to the first three qualified **Uplines**.

First upline gets **20%** of the Fast Start Bonus, **10%** of the Fast Start Bonus will go to the **Second upline** and **5%** of the Fast Start Bonus will go to the **Third Upline**.

Upline must be commission **ACTIVE** to get the FAST MENTORSHIP BONUS



	Starter	Master	Max	Premier	Challenge
Level 1	20%	20%	20%	20%	20%
Level 2	10%	10%	10%	10%	10%
Level 3	5%	5%	5%	5%	5%

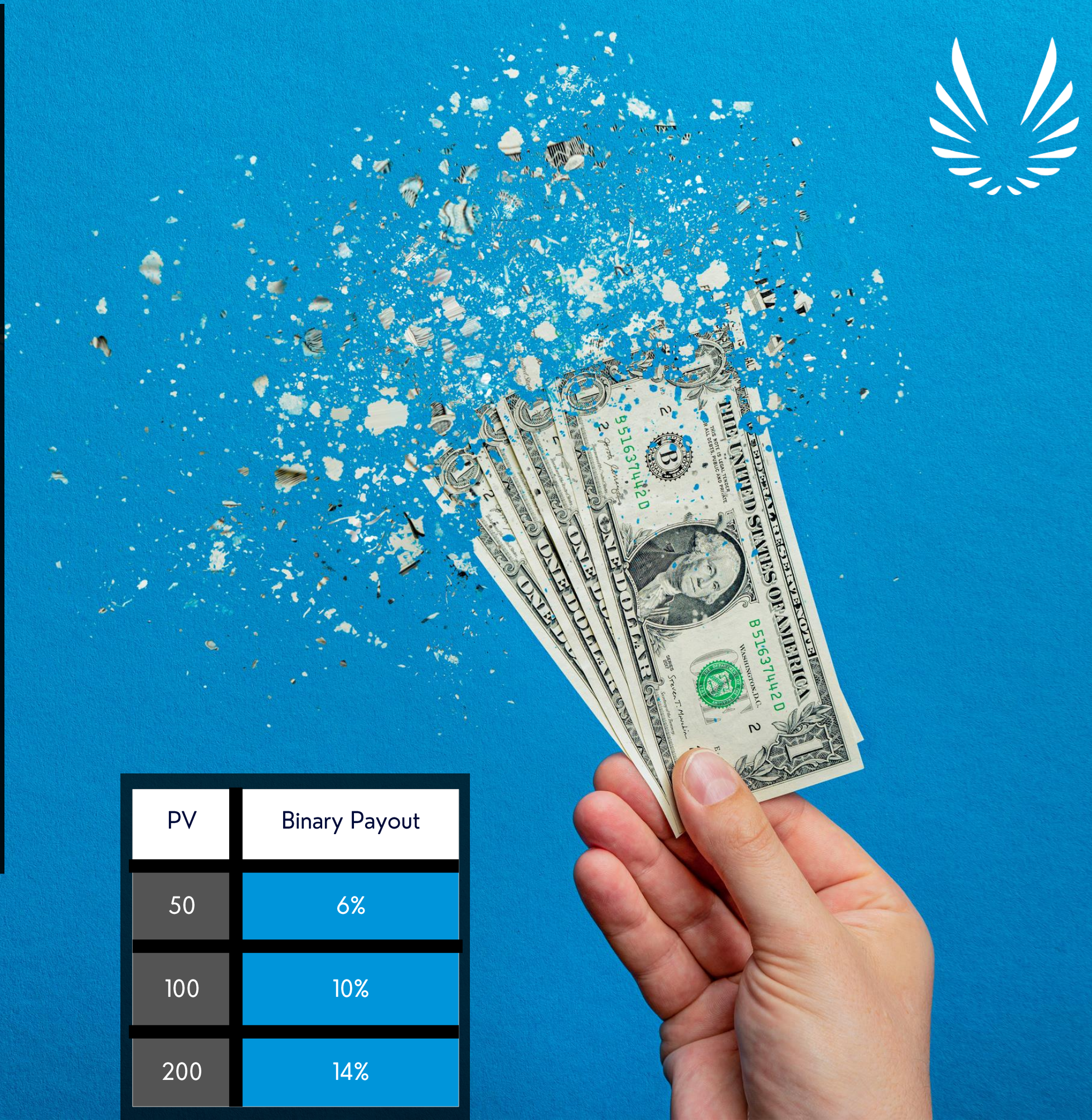
4 VANISHING SMARTSHIP

When you have 4 preferred customers enrolled in the Smartship Program for **50 PV or above**, your account automatically become active.

UPWARD Monthly SMARTSHIP - A monthly Smartship is required to participate in the entire compensation plan. A **200PV order** is required to unlock the power of the binary payout at **14%**. However, a Brand Partner may choose to a **PV 50PV order** which unlocks binary payout of **6%** or a **100PV order** which unlocks the binary payout at **10%**. Each Smartship unlocks the entire plan for **28 days**.

A Brand Partner may choose to increase their **Smartship PV** to enable them participate in a higher binary payout in the next commission cycle. Each time an increase happens, a new **28 days'** cycle begins.

*Must be commission active to earn commission**



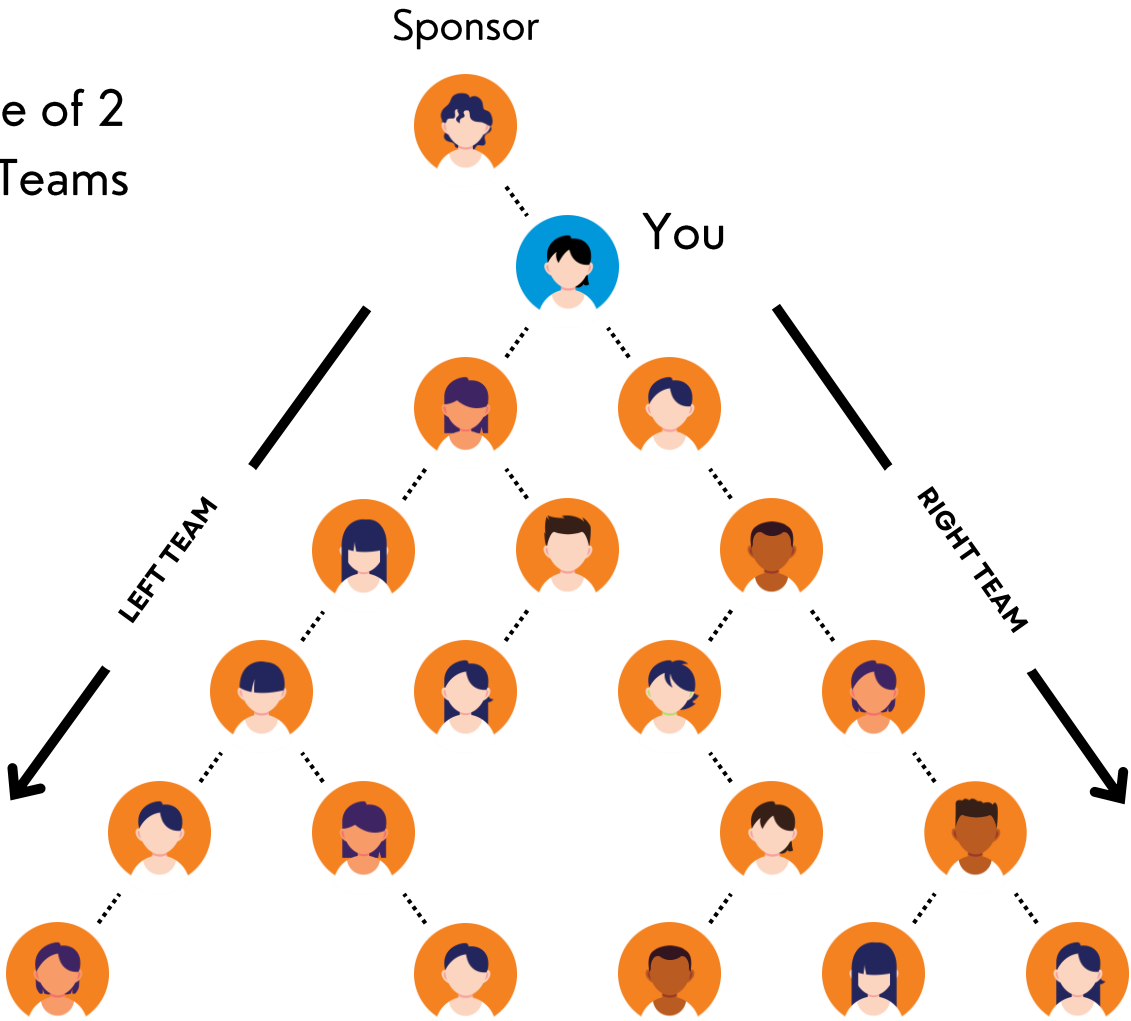
PV	Binary Payout
50	6%
100	10%
200	14%

5 INFINITY TEAM BINARY BONUS (WEEKLY)



Your personal sales organization is divided into **2 infinity teams**. Based on your selected monthly Smartship, you may earn up to **14%*** of the product volume in your lesser team volume as known as the Pay Leg.

Example of 2 Infinity Teams



Star				Maximum Weekly Commission	\$1000
Star Maker				Maximum Weekly Commission	\$1500
Manager				Maximum Weekly Commission	\$2000
Senior Manager				Maximum Weekly Commission	\$3000
Director				Maximum Weekly Commission	\$4000
Senior Director				Maximum Weekly Commission	\$6000
Executive				Maximum Weekly Commission	\$8000
Senior Executive				Maximum Weekly Commission	\$12500
Diamond				Maximum Weekly Commission	\$25000
Blue Diamond					UNLIMITED
Black Diamond					
Crown Diamond					
Upward Crown Ambassador					

6 UNILEVEL BONUS (WEEKLY)

RANK	GENERATIONS									
	1	2	3	4	5	6	7	8	9	10
Star Maker	5%									
Manager	5%	5%								
Senior Manager	5%	5%	7%							
Director	5%	5%	7%	5%						
Senior Director	5%	5%	7%	5%						
Executive	5%	5%	7%	5%						
Senior Executive	5%	5%	7%	5%	5%					
Diamond	5%	5%	7%	5%	5%	5%				
Blue Diamond	5%	5%	7%	5%	5%	5%	5%			
Black Diamond	5%	5%	7%	5%	5%	5%	5%	5%		
Crown Diamond	5%	5%	7%	5%	5%	5%	5%	5%	5%	
Upward Crown Ambassador	5%	5%	7%	5%	5%	5%	5%	5%	5%	5%



RANK	GENERATIONS	
	1	2
Senior Manager	10%	
Director	10%	
Senior Director	10%	
Executive	10%	
Senior Executive	10%	5%
Diamond	10%	5%
Blue Diamond	10%	5%
Black Diamond	10%	5%
Crown Diamond	10%	5%
Crown Ambassador	10%	5%



7

UNILEVEL LEADERSHIP MATCH BONUS (WEEKLY)

Earn Matching Bonuses of up to **10%** on the Unilevel Bonus of your personally sponsored Brand Partners. Plus, earn up to **5%** matching bonuses on up to one (1) additional level. Matching Bonuses encourage Sponsors to mentor and help develop Brand Partners deep within their marketing organization. This bonus pays on the activity of your Personal Enrollment Tree.

Therefore, the placement of a downline Distributor within your Dual Team structure does not affect your **Matching Bonus payout.**

RANK	ACHIEVEMENT REWARD	NUMBER OF DAYS*	SUPERSTAR BONUS*
Star	\$50.00	28 Days	\$25.00
Star Maker	\$100.00	28 Days	\$50.00
Manager	\$250.00	28 Days	\$100.00
Senior Manager	\$1000.00	28 Days	\$250.00

8 UPWARD RANK ADVANCEMENT BONUS (Lifetime)

As a Brand Partner's business grows, they can earn a one-time **Rank Advancement Bonus**. In order for a Brand Partner to qualify, they must attain the qualifications and requirements for their achieved rank. When you achieve specific rank levels within certain days of joining the company, **UPWARD** pays you an extra bonus for working very hard within a short period of time in addition to your **achievement bonus***

Please note that the Rewards are NOT accumulated, as you will be paid on the rank you achieve at the end of the pay period, lesser ranks are not paid on. Also, you cannot go back to earn rewards on lesser ranks.



*If you do not achieve the payment requirements within the allotted timeframe, forfeiture of the super star bonus payment will be activated per Upward policy.****

CONTINUED - UPWARD RANK ADVANCEMENT BONUS (Lifetime)



RANK	ACHIEVEMENT REWARD
Director	\$2,000 ⁽¹⁾
Senior Director	\$4,000 ⁽²⁾
Executive	\$6,000 ⁽³⁾
Senior Executive	\$8,000 ⁽⁴⁾
Diamond	\$15,000 ⁽⁵⁾
Blue Diamond	\$50,000 ⁽⁶⁾
Black Diamond	\$100,000 ⁽⁷⁾
Crown Diamond	\$250,000 ⁽⁸⁾
Upward Crown Ambassador	\$500,000 ⁽⁹⁾

ACHEIVEMENT PAYOUT AND REQUIREMENT*



1. Director: Paid in **2 Installments**. You earn 50% of the bonus the first week you hit your qualification. You earn the second 50% when you achieve that rank within the allotted time period which is maximum 4 weeks' timeframe. ***
2. Senior Director: Paid in **3 Installments**. \$ 4,000.00* Paid in 3 installments. You earn 33% of the bonus the first week you hit your qualification. You earn the second 33% when you when you achieve that rank for a second week and the final 34% when you achieve that rank for the third week within the allotted time period which is maximum 5 weeks' timeframe. ***
3. Executive: \$ 6,000.00* Paid in **4 installments**. You earn 25% of the bonus the first week you hit your qualification. You earn the second 25% when you when you achieve that rank for a second week. You earn the third 25% when you achieve that. ***
4. Senior Executive: Paid in **4 installments**. You earn 25% of the bonus the first week you hit your qualification. You earn the second 25% when you achieve that rank for a second week. You earn the third 25% when you achieve that rank for a third week and the final 25% when you achieve that rank for the fourth week within the allotted time period which is maximum 6 weeks' timeframe.***
5. Diamond: Paid in **4 installments**. You earn 25% of the bonus the first week you hit your qualification. You earn the second 25% when you achieve that rank for a second week. You earn the third 25% when you achieve that rank for a third week and the final 25% when you achieve that rank for the fourth week within the allotted time period which is maximum 8 weeks' timeframe.***
6. Blue Diamond: Paid in **5 installments**. You earn 20% of the bonus the first week you hit your qualification. You earn the second 20% when you achieve that rank for a second week. You earn the third 20% when you achieve that rank for a third week. You earn the fourth 20% when you achieve that rank for a fourth week and the final 20% when you achieve that rank for the fifth week within the allotted time period which is maximum 10 weeks' timeframe.***
7. Black Diamond: Paid in **5 installments**. You earn 20% of the bonus the first week you hit your qualification. You earn the second 20% when you achieve that rank for a second week. You earn the third 20% when you achieve that rank for a third week. You earn the fourth 20% when you achieve that rank for a fourth week and the final 20% when you achieve that rank for the fifth week within the allotted time period which is maximum 10 weeks' timeframe.***
8. Crown Diamond: Paid in **6 installments**. You earn 16% of the bonus the first week you hit your qualification. You earn the second 16% when you achieve that rank for a second week. You earn the third 16% when you achieve that rank for a third week. You earn the fourth 16% when you achieve that rank for a fourth week. You earn the fourth 16% when you achieve that rank for a fifth week and the final 20% when you achieve that rank for the sixth week within the allotted time period which is maximum 12 weeks' timeframe.***
9. Upward Crown Ambassador: Paid in **6 installments**. You earn 16% of the bonus the first week you hit your qualification. You earn the second 16% when you achieve that rank for a second week. You earn the third 16% when you achieve that rank for a third week. You earn the fourth 16% when you achieve that rank for a fourth week. You earn the fourth 16% when you achieve that rank for a fifth week and the final 20% when you achieve that rank for the sixth week within the allotted time period which is maximum 12 weeks' timeframe.***



Star	\$50
Star Maker	\$100
Manager	\$200
Senior Manager	\$300
Director	\$500
Senior Director	\$600
Executive	\$700
Senior Executive	\$1000

9 LIFESTYLE LEADERSHIP BONUS (Monthly)

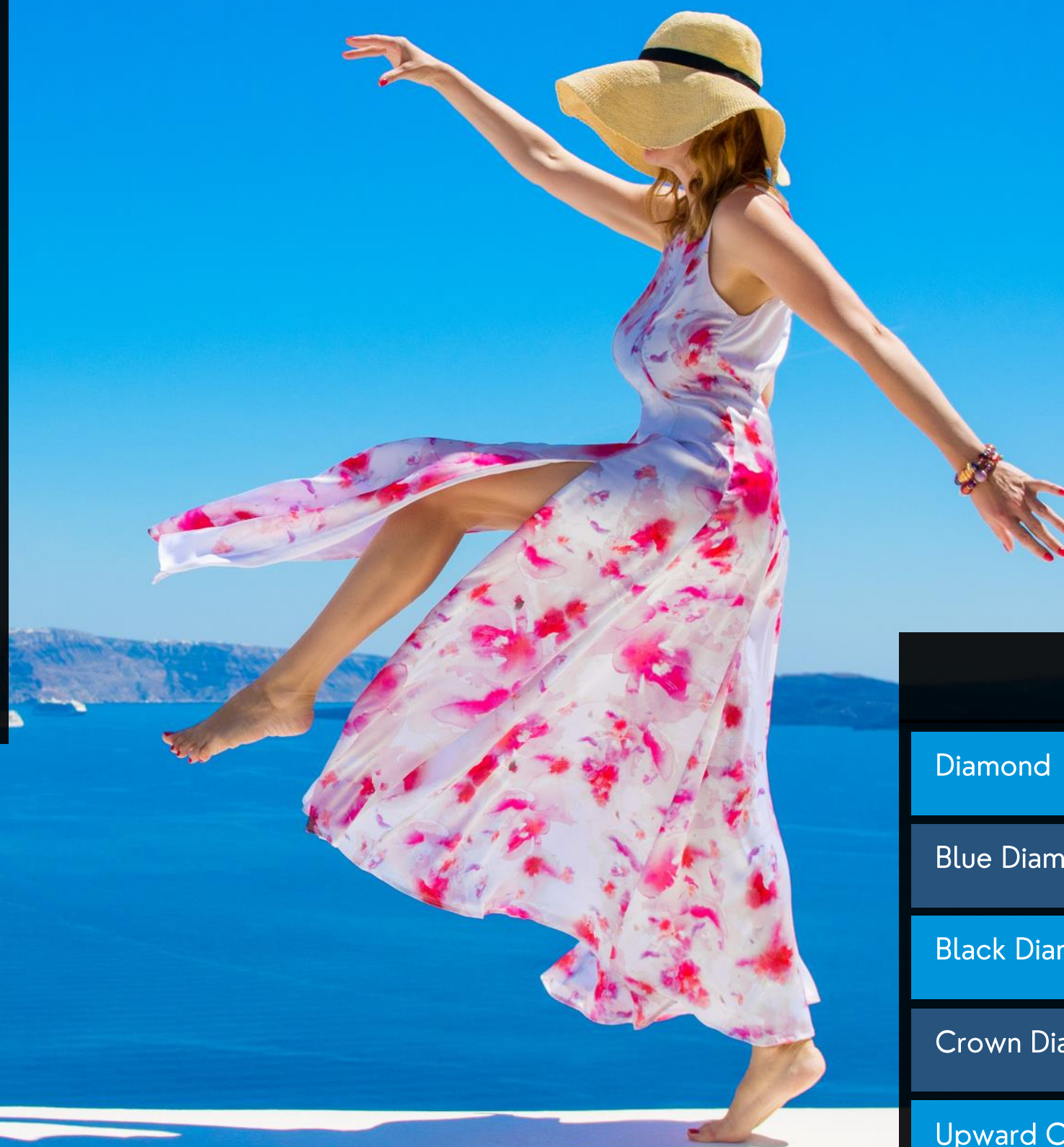
As you develop leadership within your organization, your rewards grow exponentially. At the end of each month, **Distributors** will be paid the bonus amount associated with the highest rank they hit **twice during the month**.

Note: **Lifestyle Leadership Bonus** payment will commence after the second time of hitting the rank. When you first hit the rank you will be paid only the **Rank Advancement Bonus**.

10 GLOBAL LEADERSHIP BONUS (Weekly)

If you're amongst the best that **UPWARD** has to offer, then you earn the prestigious **Global Leadership Bonus** depending on your rank. The **Global Pool Rewards Leaders** who reach beyond their dreams and continue building the company and their future by generating high sales volume. **Two percent (2%)** of **UPWARD's Worldwide Unilevel Commissionable Volume (CV)** will be shared by qualified **Diamond Brand Partners and above**. The Pool pays in direct proportion to one's sales contributions to the total Unilevel CV.

Note: **Global Leadership Bonus** payment will **ONLY** commence after the second time of hitting the rank. When you first hit the rank you will be paid only the **Rank Advancement Bonus**.



Weekly Bonus

Diamond	\$1000
Blue Diamond	\$2000
Black Diamond	\$4000
Crown Diamond	\$6000
Upward Crown Ambassador	\$10000

11 LUXURY TRAVEL GETAWAYS

UPWARD is one of the few companies that has incorporated luxury travel and vacations in its compensation plan." Each year **Diamonds & above** will be invited* to the annual leadership conference, which will be held in an **exotic location**.



- 📍 UNITED STATES
- 📍 BAHAMAS
- 📍 DIAMOND TRIPS
- 📍 DUBAI
- 📍 CANADA
- 📍 CRUISE TRIPS
- 📍 ITALY
- 📍 PERU
- 📍 PARIS
- 📍 LONDON

UPWARD REVIVE

UPWARD's vision of vitality and prosperity isn't limited to the individual. It extends to the wider world as well. After all, the culture of UPWARD is rooted in caring for self, for the community, for nature, and for the world. This is why **UPWARD Global** has created **UPWARD Cares**, a public charity dedicated to providing nutritional support to impoverished children and families around the world.

On the 15th of every month **UPWARD leaders** are assigned to various charities and community service engagement to carry the message of **UPWARD** to the world.

All earning is subject to state and federal income taxes. All UPWARD distributor are considered as independent contractor and they will be issued 1099 at the end of the year to complete their taxes.

HOW TO RANK

RANK	*LTV	**STV	Max STV SINGLE Leg	Potential Weekly Max Commission
Star	500	1,000	1,000	Maximum Weekly Commission \$1000
Star Maker	1500	2,000	2,000	Maximum Weekly Commission \$1500
Manager	3,000	4,000	4,000	Maximum Weekly Commission \$2000
Senior Manager	5,000	7,000	7,000	Maximum Weekly Commission \$3000
Director	7,500	10,500	10,500	Maximum Weekly Commission \$4000
Senior Director	11,000	15,000	15,000	Maximum Weekly Commission \$6000
Executive	15,000	20,000	20,000	Maximum Weekly Commission \$8000
Senior Executive	20,000	35,000	35,000	Maximum Weekly Commission \$12500
Diamond	30,000	50,000	50,000	Maximum Weekly Commission \$25000
Blue Diamond	40,000	75,000	75,000	UNLIMITED
Black Diamond	40,000	150,000	150,000	UNLIMITED
Crown Diamond	50,000	300,000	300,000	UNLIMITED
Upward Crown Ambassador	50,000	500,000	500,000	UNLIMITED

**LTV is Lesser Team Volume of your 2 infinity binary teams and **STV is your Sponsor Tree Volume.*

The UPWARD Compensation Plan offers an exciting opportunity to reward individuals for their efforts in selling products and services, as well as for sponsoring other participants who do the same. While the potential for success is unlimited, the actual results you achieve will vary depending on your personal commitment levels and sales skills.*



UPWARD

Join Now!

REGISTER TODAY

